

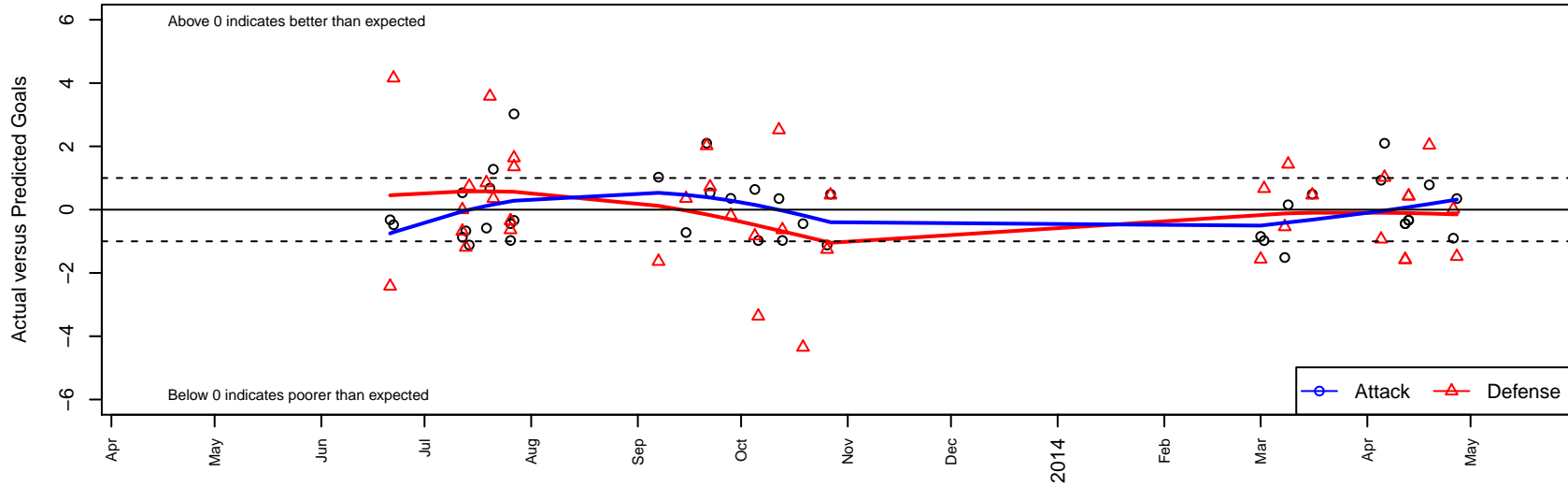
Westside Timbers Mundial B01

Westside Timbers
 Beaverton, OR
 B01 total strength=195
 attack=0.15 defense=0.1
 fall league = OPL Third Division U12, Spr OYS
 alt names used:
 Westside Timbers B01 Mundial
 WT Mundial [B01]
 WT B01 Mundial
 WESTSIDE TIMBERS B01 MUNDIAL (OR)

Venues played:
 Cascadia Challenge Silver U12
 PCU Summer Classic BU12 Silver
 Beaverton Cup BU12 Silver Blue
 Oswego Nike Cup Silver U12
 OPL Third Division U12
 Spr OYS B01 Spring White
 OYS Presidents Cup B01



Westside Timbers Mundial B01
 Dots are actual minus expected GF (blue circles) and GA (red triangles).
 Blue line is smoothed change in attack strength. Red is smoothed change in defense strength.



	date	home		away		venue	pred.home	pred.away
26922	2014-04-27	Hillside SC Thunderbolts B01	9	Westside Timbers Mundial B01	1	OYS Presidents Cup B01	7.52	0.65
26744	2014-04-26	PCU Black B01	3	Westside Timbers Mundial B01	0	Spr OYS B01 Spring White	3.02	0.90
26565	2014-04-19	Westside Timbers Mundial B01	1	Academia Leon B01	12	OYS Presidents Cup B01	0.22	14.04
26310	2014-04-13	Capital FC Timbers Red –was Black B01	11	Westside Timbers Mundial B01	0	OYS Presidents Cup B01	11.43	0.33
26314	2014-04-13	Capital FC Timbers Red –was Black B01	11	Westside Timbers Mundial B01	0	OYS Presidents Cup B01	11.43	0.33
26027	2014-04-12	Westside Timbers Mundial B01	0	ETFC Valencia Black –was Blue B01	10	OYS Presidents Cup B01	0.44	8.42
26031	2014-04-12	Westside Timbers Mundial B01	0	ETFC Valencia Black –was Blue B01	10	OYS Presidents Cup B01	0.44	8.42
25867	2014-04-06	Westside Timbers Mundial B01	3	PCU Black B01	2	Spr OYS B01 Spring White	0.90	3.02
25668	2014-04-05	Bend FC Timbers White B01	6	Westside Timbers Mundial B01	2	Spr OYS B01 Spring White	5.07	1.07
24939	2014-03-16	Westside Timbers Mundial B01	2	ETFC Valencia Red –was White B01	1	Spr OYS B01 Spring White	1.51	1.46
24259	2014-03-09	Westside Timbers Mundial B01	1	Washington Timbers Crimson B01	2	Spr OYS B01 Spring White	0.85	3.44
23948	2014-03-08	ETFC Valencia Red –was White B01	2	Westside Timbers Mundial B01	0	Spr OYS B01 Spring White	1.46	1.51
23701	2014-03-02	Westside Timbers Mundial B01	0	BSC Portland Gold B01	3	Spr OYS B01 Spring White	0.98	3.67
23458	2014-03-01	Washington Timbers Crimson B01	5	Westside Timbers Mundial B01	0	Spr OYS B01 Spring White	3.44	0.85
16205	2013-10-27	ETFC Valencia Red –was White B01	1	Westside Timbers Mundial B01	2	OPL Third Division U12	1.46	1.51
15814	2013-10-26	NEU Lazio Silver B01	3	Westside Timbers Mundial B01	0	OPL Third Division U12	1.74	1.12
14895	2013-10-19	WUSC Arsenal Navy B01	11	Westside Timbers Mundial B01	0	OPL Third Division U12	6.65	0.44
14318	2013-10-13	Lake Oswego SC Comets B01	6	Westside Timbers Mundial B01	0	OPL Third Division U12	5.36	0.97
13849	2013-10-12	Westside Timbers Mundial B01	1	Hillside SC Thunderbolts B01	5	OPL Third Division U12	0.65	7.52
13273	2013-10-06	Canby United SC Summit B01	5	Westside Timbers Mundial B01	0	OPL Third Division U12	1.64	0.97
12820	2013-10-05	Westside Timbers Mundial B01	2	Foothills SC Falcons Green B01	2	OPL Third Division U12	1.36	1.17
11875	2013-09-28	Westside Timbers Mundial B01	1	FC West Warriors B01	5	OPL Third Division U12	0.64	4.81
11378	2013-09-22	HSC United B01	6	Westside Timbers Mundial B01	1	OPL Third Division U12	6.72	0.47
10925	2013-09-21	PCU Black B01	1	Westside Timbers Mundial B01	3	OPL Third Division U12	3.02	0.90
10407	2013-09-15	Westside Timbers Mundial B01	0	HSC Milan B01	6	OPL Third Division U12	0.72	6.35
9014	2013-09-07	Westside Timbers Mundial B01	2	Lake Oswego SC Comets B01	7	OPL Third Division U12	0.97	5.36
4687	2013-07-27	Westside Timbers Mundial B01	0	Maui Strikers B01	6	Oswego Nike Cup Silver U12	0.34	7.35
4689	2013-07-27	Canby United SC Summit B01	0	Westside Timbers Mundial B01	4	Oswego Nike Cup Silver U12	1.64	0.97

	date	home		away		venue	pred.home	pred.away
4517	2013-07-26	Westside Timbers Mundial B01	0	Lake Oswego SC Comets B01	6	Oswego Nike Cup Silver U12	0.97	5.36
4520	2013-07-26	Westside Timbers Mundial B01	0	WUSC Arsenal Navy B01	7	Oswego Nike Cup Silver U12	0.44	6.65
4166	2013-07-21	HSC Milan B01	6	Westside Timbers Mundial B01	2	Beaverton Cup BU12 Silver Blue	6.35	0.72
3695	2013-07-20	Westside Timbers Mundial B01	1	Eastside Timbers White B01	4	Beaverton Cup BU12 Silver Blue	0.32	7.58
3419	2013-07-19	RVSC Timbers B01	7	Westside Timbers Mundial B01	0	Beaverton Cup BU12 Silver Blue	7.85	0.58
3182	2013-07-14	Westside Timbers Mundial B01	0	NEU Lazio Silver B01	1	PCU Summer Classic BU12 Silver	1.12	1.74
2938	2013-07-13	Pacific FC Rapids B01	6	Westside Timbers Mundial B01	0	PCU Summer Classic BU12 Silver	4.81	0.67
2741	2013-07-12	Thelo Cosmos B01	6	Westside Timbers Mundial B01	1	PCU Summer Classic BU12 Silver	6.00	0.47
2744	2013-07-12	Westside Timbers Mundial B01	0	Crossfire Premier D B01	6	PCU Summer Classic BU12 Silver	0.87	5.32
1774	2013-06-22	SESC Celtic B01	7	Westside Timbers Mundial B01	0	Cascadia Challenge Silver U12	11.16	0.48
1649	2013-06-21	Eastside Timbers White B01	10	Westside Timbers Mundial B01	0	Cascadia Challenge Silver U12	7.58	0.32